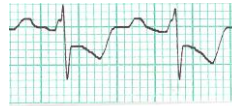
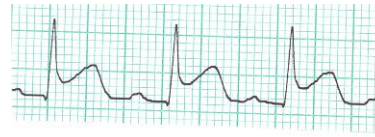




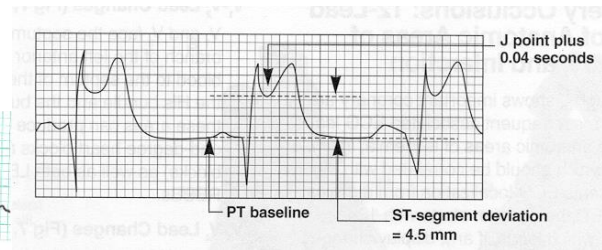
Ischemia: T Wave Inversion



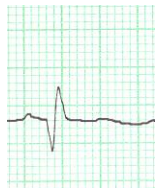
ST Depression



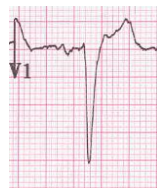
Injury: ST Segment Elevation



<b>I</b> <b>Lateral</b> (Circumflex) ↑	<b>AVR</b> ↓	<b>V1</b> <b>Septal</b> (LAD) ↓	<b>V4</b> <b>Anterior</b> (LAD) Biphasic
<b>II</b> <b>Inferior</b> (RCA) ↑	<b>AVL</b> <b>Lateral</b> (Circumflex) ↑ or ↓	<b>V2</b> <b>Septal</b> (LAD) ↓	<b>V5</b> <b>Lateral</b> (Circumflex) ↑
<b>III</b> <b>Inferior</b> (RCA) ↑	<b>AVF</b> <b>Inferior</b> (RCA) ↑	<b>V3</b> <b>Anterior</b> (LAD) Biphasic	<b>V6</b> <b>Lateral</b> (Circumflex) ↑



Infarction: Significant Q waves  
 1/3 height of R wave or > 0.03ms wide



New Left Bundle Branch Block needs reperfusion  
 QRS > 0.12 sec and negative in V1

- Normal** Lead I ↑, AVF ↑ (-30 to +90)
- LAD** Lead I ↑, AVF ↓ (-30 to -90)
- RAD** Lead I ↓, AVF ↑ (90 to 180)
- Extreme RAD** Lead I ↓, AVF ↓ (-90 to ± 180)
- LAH:** Lead I ↑, Leads II & III ↓
- LPH** Lead I ↓, Leads II & III ↑